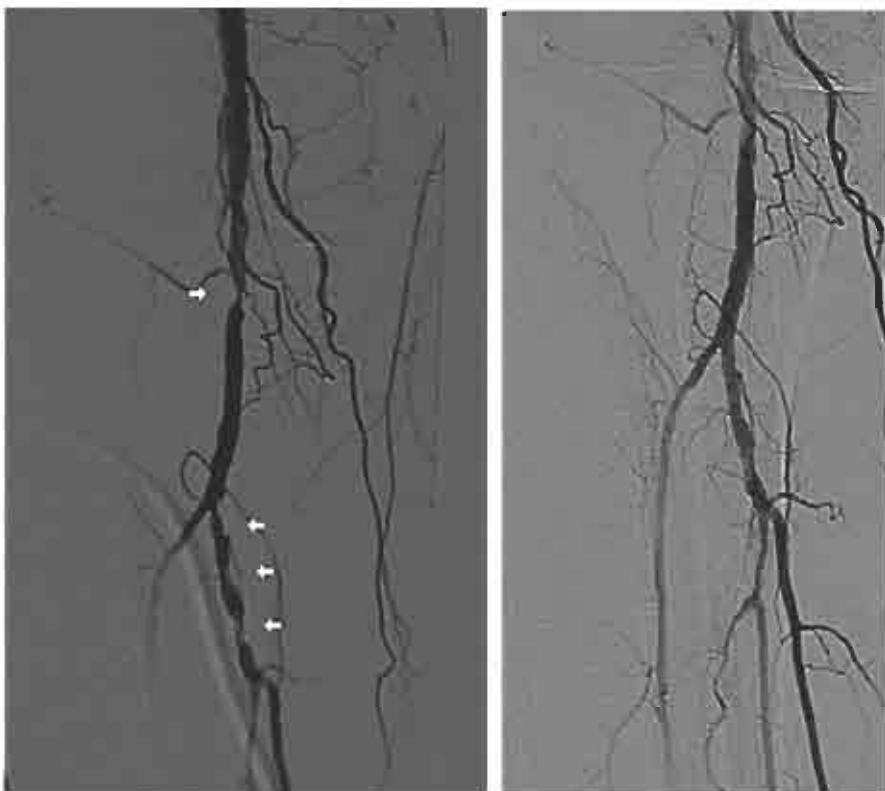


CASE STUDY: 83yo WM with severe right lower leg claudication.

Initial images demonstrate a high grade focal stenosis of the distal popliteal artery, severe disease of the tibioperoneal trunk, and a totally occluded anterior tibial artery. Foxhollow Silverhawk atherectomy was performed using a SX and MS cutter.

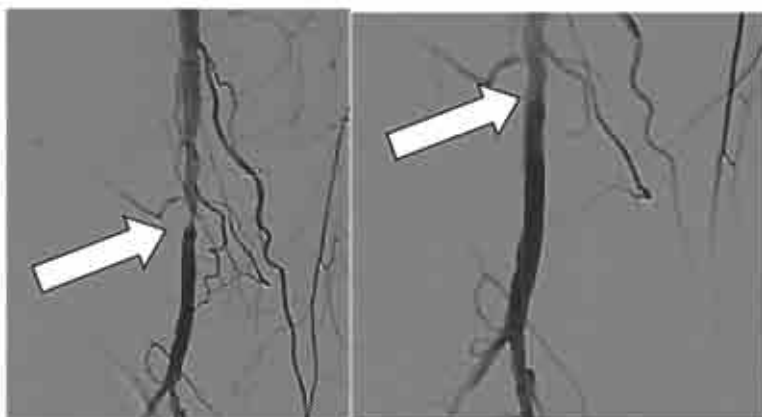
Final angiography demonstrates minimal residual disease and restoration of flow in the anterior tibial artery. The patient is now symptom free and was discharged from the hospital 4 hours after the procedure.



Symptoms of PAD can include, but are not limited to the following:

- **Claudication:** dull, cramping pain in the hips, thighs, calves or buttocks
- **Numbness or tingling** in the leg, foot or toes
- **Changes in skin temperature:** cold to the touch
- **Changes in skin color:** bluish or reddish coloration
- **Impotence**
- **Sores or infections** that do not heal
- **Weakness** in legs or arms

Initial angiogram (left) showing popliteal and TP trunk with areas of stenosis. Image to the right shows AT occlusion. Final results after Silver hawk atherectomy (upper right)



Close up showing focal stenosis in distal popliteal artery.

Charles J. Gbur Jr., MD, FACC, FSCAI, DMO